



First Location:
December 2009



First Location:
May 1st,
2010

**Candy board from
previous winter**



Sticks were under candy board to assure proper bee space and to prevent board from sagging



Looking for over-wintered Queen





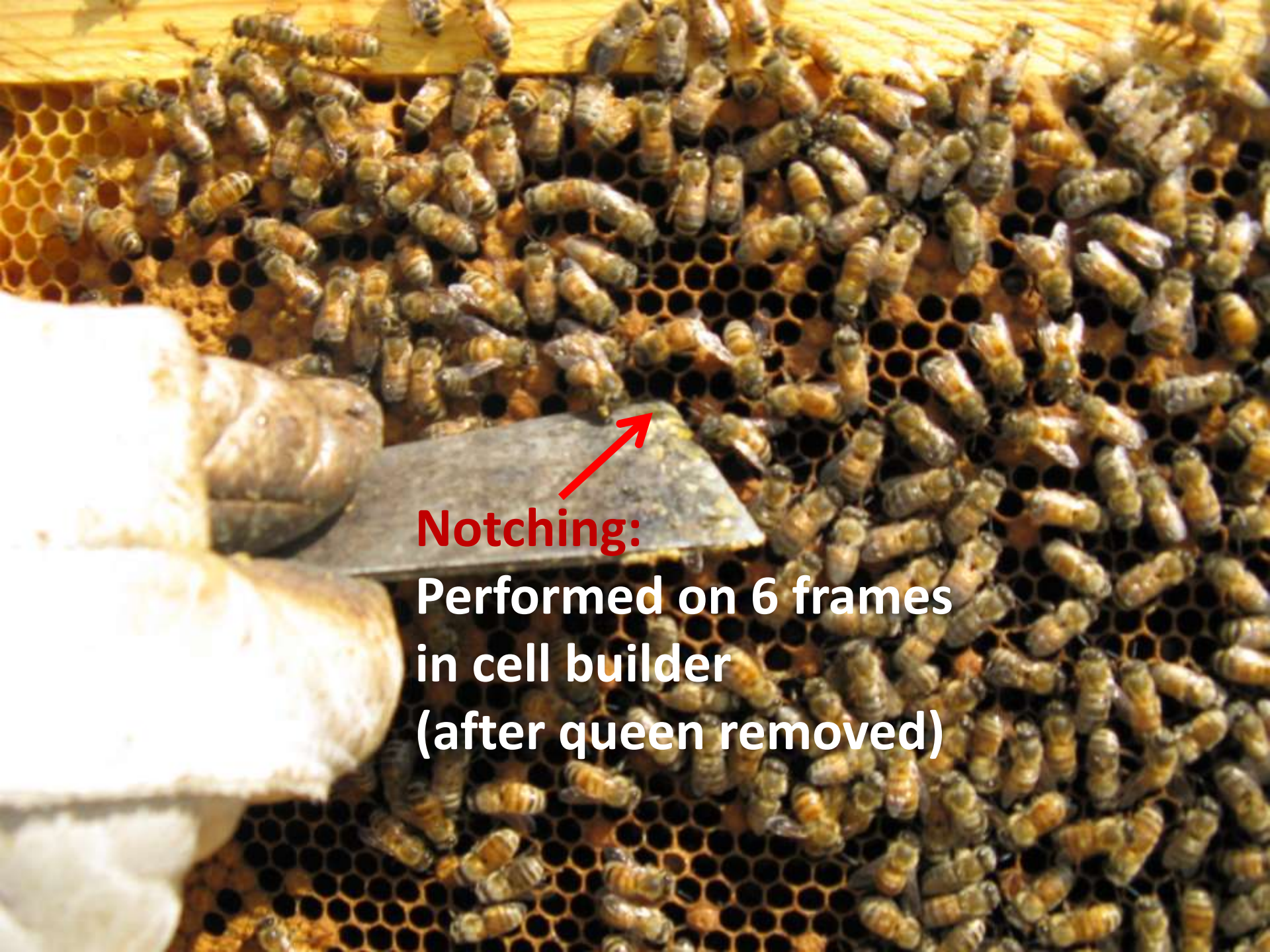




Queen



**Removed with 2 frames of brood and two shakes of bees
and relocated over 2 miles away**



Notching:

**Performed on 6 frames
in cell builder
(after queen removed)**



Notching 7
at a time

One week later:
**May 8,
2010**





Looking for Queen Cells



OTS Queen Cells

Bees for Spring Starts



Making Spring Starts

